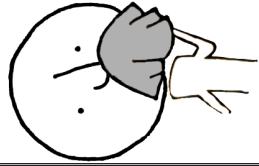
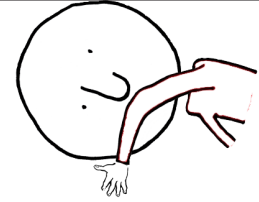


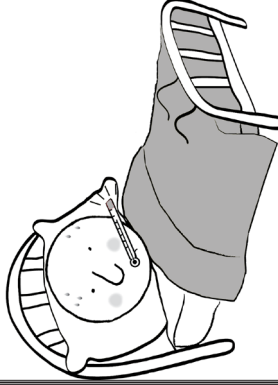
打擊流感



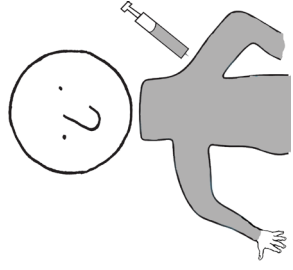
咳嗽時請把嘴遮住！



洗手。

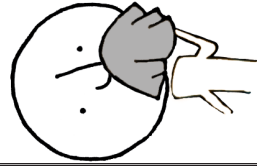


生病時留在家中。

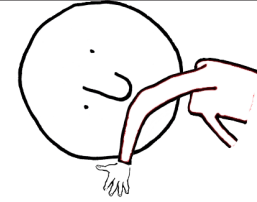


注射疫苗。

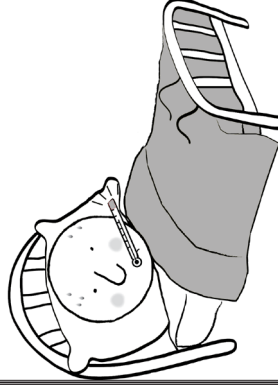
打擊流感



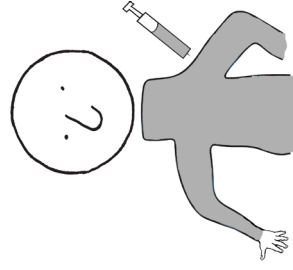
咳嗽時請把嘴遮住！



洗手。

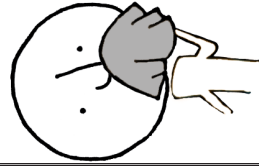


生病時留在家中。

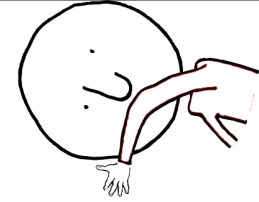


注射疫苗。

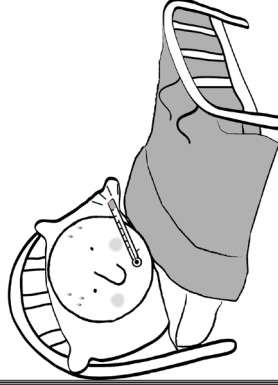
打擊流感



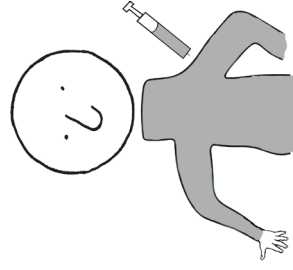
咳嗽時請把嘴遮住！



洗手。

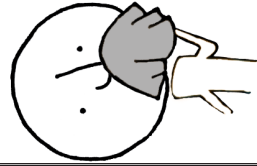


生病時留在家中。

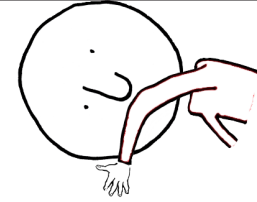


注射疫苗。

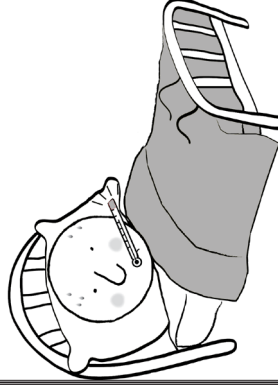
打擊流感



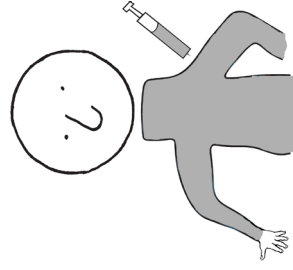
咳嗽時請把嘴遮住！



洗手。



生病時留在家中。



注射疫苗。

FIGHT the FLU

打擊流感

Questions about flu?

Minnesota Department
of Health

www.mdhflu.com

Centers for Disease Control

www.cdc.gov

1-800-CDC-INFO
(800-232-4636)

TTY: 1-888-232-6348
24 hours/every day

Your city or county public
health department

FIGHT the FLU

打擊流感

Questions about flu?

Minnesota Department
of Health

www.mdhflu.com

Centers for Disease Control

www.cdc.gov

1-800-CDC-INFO
(800-232-4636)

TTY: 1-888-232-6348
24 hours/every day

Your city or county public
health department

FIGHT the FLU

打擊流感

Questions about flu?

Minnesota Department
of Health

www.mdhflu.com

Centers for Disease Control

www.cdc.gov

1-800-CDC-INFO
(800-232-4636)

TTY: 1-888-232-6348
24 hours/every day

Your city or county public
health department

FIGHT the FLU

打擊流感

Questions about flu?

Minnesota Department
of Health

www.mdhflu.com

Centers for Disease Control

www.cdc.gov

1-800-CDC-INFO
(800-232-4636)

TTY: 1-888-232-6348
24 hours/every day

Your city or county public
health department