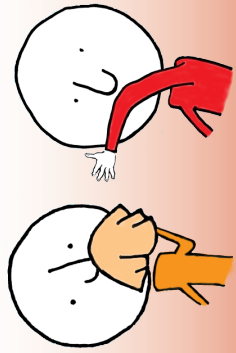
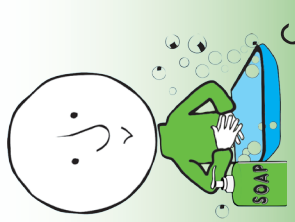


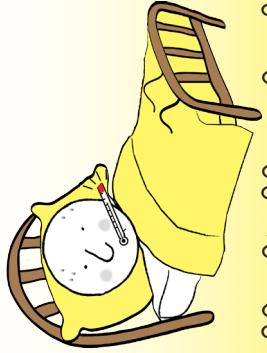
ပြေးကယ်ပေးဖို့အတွက်



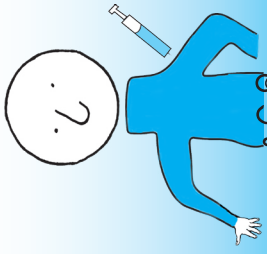
မအာရုံစိုက်ပါအောင်!



သို့မဟုတ်

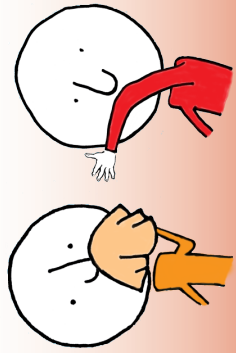


အိပ်ခန်းခွဲအိပ်ခန်းအဖြစ်

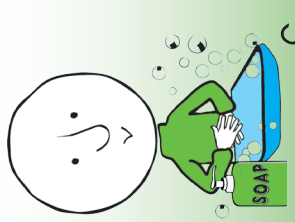


ဆေးကုသနိုင်ပါသည်။

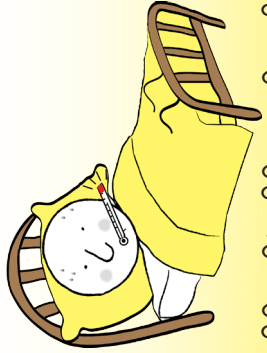
ပြေးကယ်ပေးဖို့အတွက်



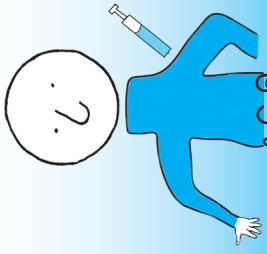
မအာရုံစိုက်ပါအောင်!



သို့မဟုတ်

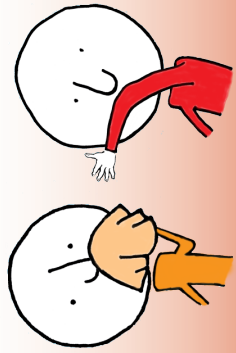


အိပ်ခန်းခွဲအိပ်ခန်းအဖြစ်

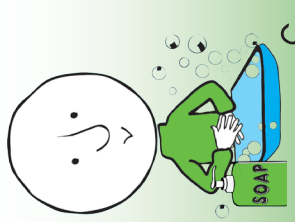


ဆေးကုသနိုင်ပါသည်။

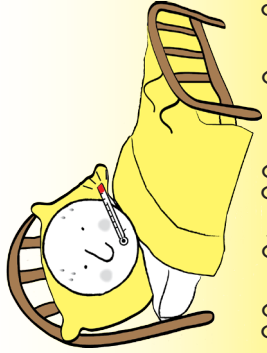
ပြေးကယ်ပေးဖို့အတွက်



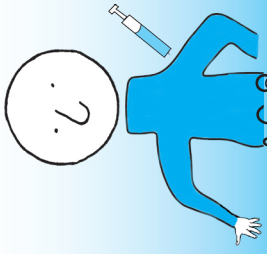
မအာရုံစိုက်ပါအောင်!



သို့မဟုတ်

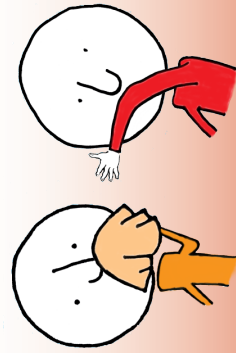


အိပ်ခန်းခွဲအိပ်ခန်းအဖြစ်

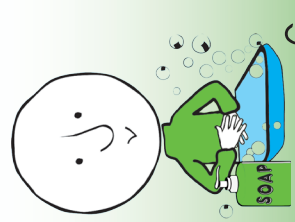


ဆေးကုသနိုင်ပါသည်။

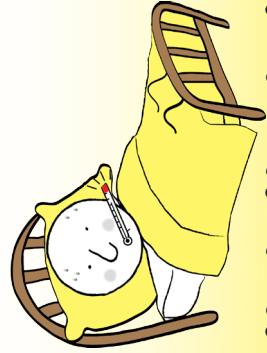
ပြေးကယ်ပေးဖို့အတွက်



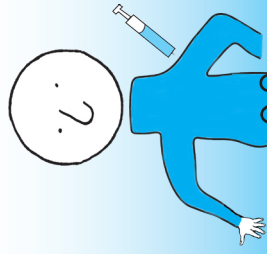
မအာရုံစိုက်ပါအောင်!



သို့မဟုတ်



အိပ်ခန်းခွဲအိပ်ခန်းအဖြစ်



ဆေးကုသနိုင်ပါသည်။

FIGHT the FLU

တို့ဆာတိုးကူးတၢ်ဆါ

Questions about flu?

Minnesota Department
of Health

www.mdhflu.com

Centers for Disease Control

www.cdc.gov

1-800-CDC-INFO
(800-232-4636)

TTY: 1-888-232-6348

24 hours/every day

Your city or county public
health department

FIGHT the FLU

တို့ဆာတိုးကူးတၢ်ဆါ

Questions about flu?

Minnesota Department
of Health

www.mdhflu.com

Centers for Disease Control

www.cdc.gov

1-800-CDC-INFO
(800-232-4636)

TTY: 1-888-232-6348

24 hours/every day

Your city or county public
health department

FIGHT the FLU

တို့ဆာတိုးကူးတၢ်ဆါ

Questions about flu?

Minnesota Department
of Health

www.mdhflu.com

Centers for Disease Control

www.cdc.gov

1-800-CDC-INFO
(800-232-4636)

TTY: 1-888-232-6348

24 hours/every day

Your city or county public
health department

FIGHT the FLU

တို့ဆာတိုးကူးတၢ်ဆါ

Questions about flu?

Minnesota Department
of Health

www.mdhflu.com

Centers for Disease Control

www.cdc.gov

1-800-CDC-INFO
(800-232-4636)

TTY: 1-888-232-6348

24 hours/every day

Your city or county public
health department